





Rise to the top.

Take a peek into the accomplished life. At **Shang Salcedo Place**, savor the rise to the top with every waking moment. This 64-storey residential condo, located in the bustling Makati CBD, beckons those who want to take on the reins at work and enjoy the quiet indulgence of home.

This is living
at the height
of luxury.

From the top players of the field.



SHANGRI-LA PLAZA



THE SHANG GRAND TOWER



THE ENTERPRISE CENTER



THE ST. FRANCIS SHANGRI-LA PLACE



Shang Salcedo Place is brought to you by **Shang Properties, Inc.**, an affiliate of **Shangri-La Hotels and Resorts** worldwide and **Kerry Properties Limited** – one of Hong Kong's largest property investment and development companies – and joins the group's other prominent developments such as The Shang Grand Tower and The Enterprise Center in Makati, The St. Francis Shangri-La Place, Shangri-La Plaza and its current project, One Shangri-La Place in Ortigas Center.

6:01 AM



Take my time to wake
up from here, I can see how
great the day will be.

Uptown in no time.





Start your day just the way you want it.

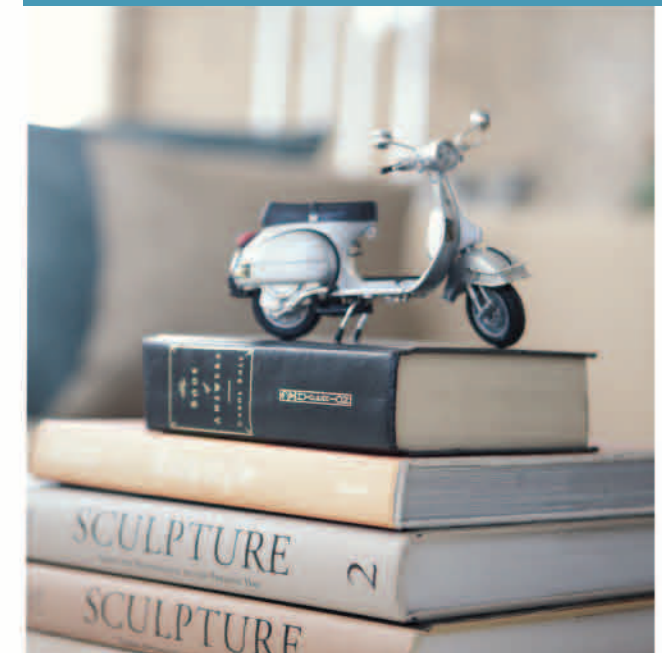
From Shang Salcedo Place, business, commercial and medical establishments within the Makati CBD are easily accessible. Located along the streets of Gil Puyat (Buendia), Tordesillas and HV de la Costa, moving around by foot or by car is a breeze, and commuting options are fast and hassle-free.



Top of the class in 10 minutes tops.



Get to the metro's new University Belt in no time. The Ateneo Professional Schools and the Mapua Institute of Technology - Makati Campus are just a few steps away, ensuring a smooth transition from the academic path to the road to success.



The high life for keeps.



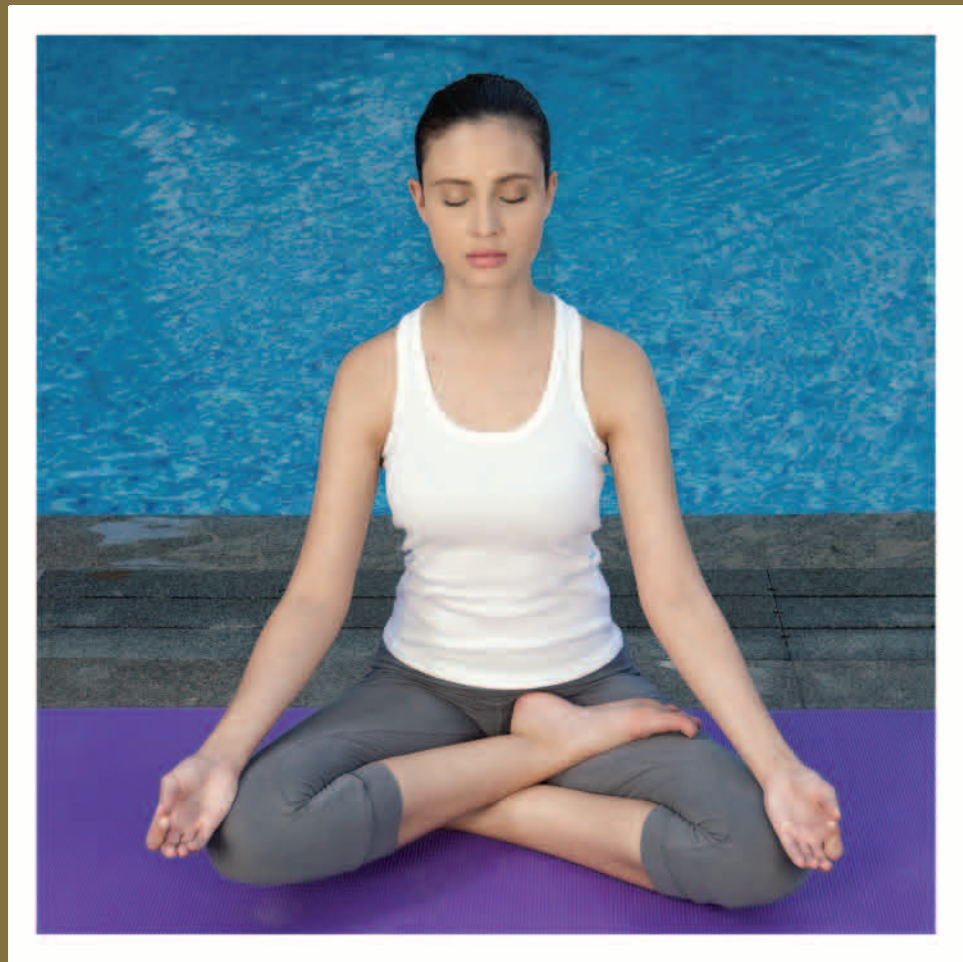
Experience the warm comforts of Salcedo Village, where city conveniences and community closeness meet. The nearby Salcedo Park provides a peaceful oasis. Gourmet bistros and the weekend Salcedo Market satisfy your cravings with a bevy of flavors. Cultural offerings such as concerts and art exhibits feed the soul.



PULL-OUT 1
(Open "SSP Pull-Out 1.pdf to view content)



Outdoor lunches or
a full workout with crunches,
a midday swim too.



11:45 AM

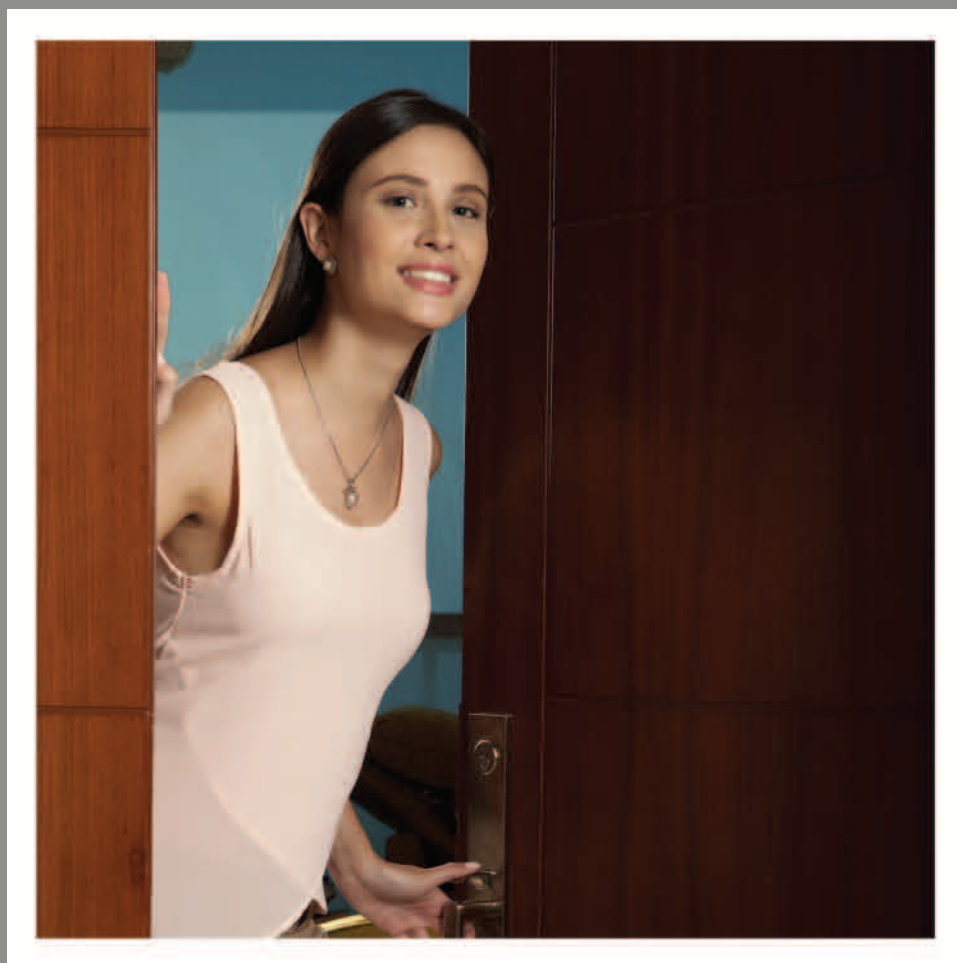
Indulge the body and soul. Quench the midday heat with a few laps in the pool. A fully-equipped gym and fitness center awaits those who want to fit in crunches in their lunch hour. A spacious outdoor garden offers a peaceful retreat, while the well-appointed children's playroom is a guaranteed hit with the kids.



PULL-OUT 2
(Open "SSP Pull-Out 2.pdf" to view content)





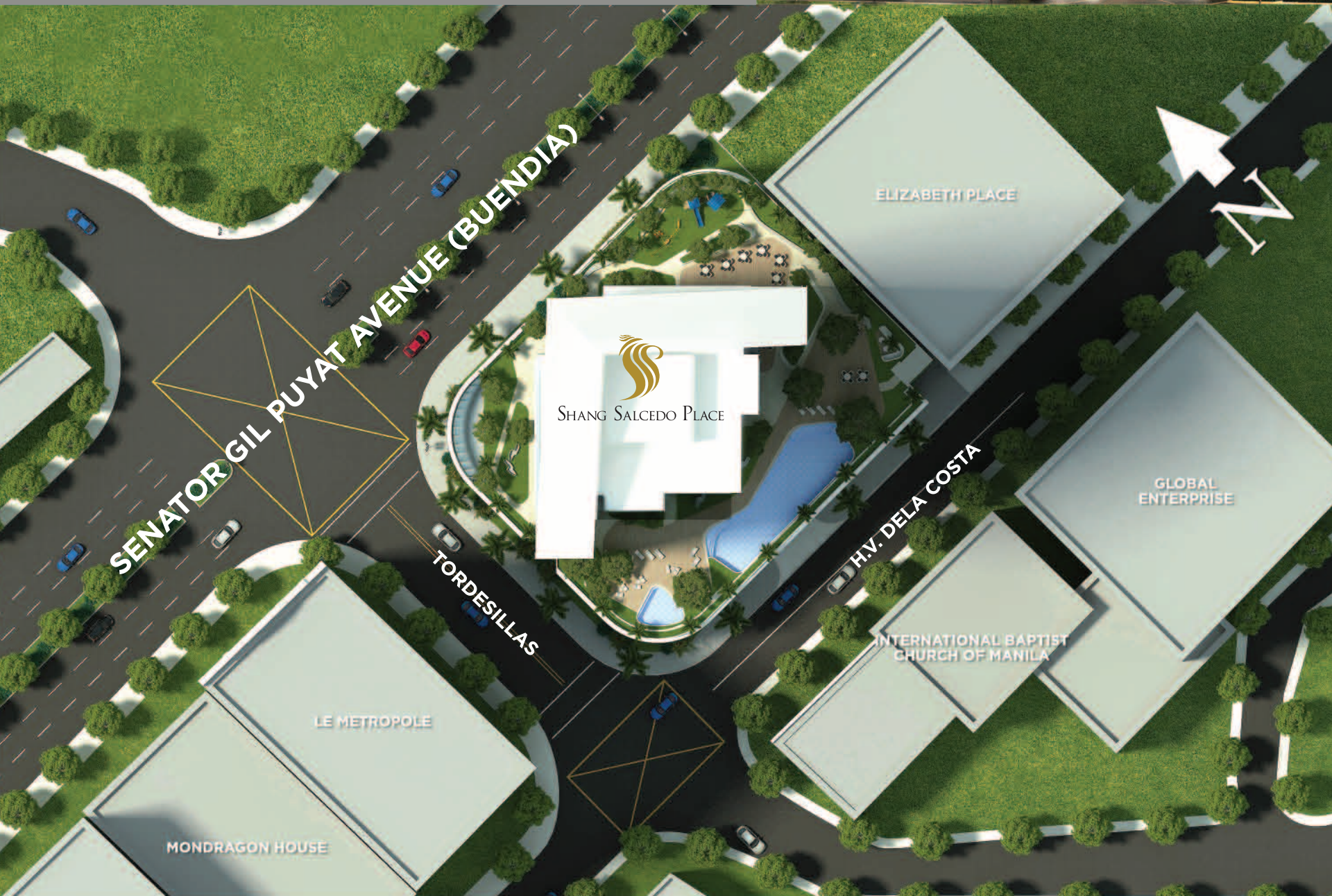


Now my door opens
A kiss, a hug,
a warm welcome home.

7:15 PM



Outstanding structure.



Designed by **Wong & Tung International Limited**, Shang Salcedo Place towers above the Makati skyline with its iconic architecture, making it the perfect perch for high-flying individuals.

Aspirational design. Inspired living.



The interiors were created by **Manny Samson and Associates**, with details that offer a distinction of luxury and quiet elegance. The designs were inspired from the modern aspirations of the accomplished man who deserves to live the high life.



THE SHANG SALCEDO PLACE TEAM

Design Architect : **Wong & Tung International Limited**

Local Architect : **Pimentel Rodriguez Simbulan & Partners (PRSP Architects)**

Civil, Structural, Geotechnical Engineer : **Sy² + Associates**

MEP Engineer : **J.P. Rapi Phil. Inc.**

QS Consultant : **Rider Levett Bucknall Philippines, Inc.**

Interior Designer : **Manny Samson and Associates**

Environmental Examination Consultant : **Alai Environment'I Services**

Landscape Consultant : **ALN (Adrian L. Normal Limited)**

Façade Consultant : **ALT Cladding, Inc.**

Wind Tunnel Consultant : **Windtech Consultants Pty. Ltd.**

The particulars, details and visuals shown herein are based on present plans and are primarily intended to give a general idea of the project. As such, they are not to be relied upon as statements of fact. Buyers are invited to verify their factual correctness as the contents herein are subject to change without prior notice and do not constitute part of an offer or contract.

Shang Salcedo Place

For more information,
please contact:

Website: **www.ShangSales.com**

E-mail: **info@ShangSales.com**

Phone: **(+632) 502 6535**

+63 917 89-S₇H₄A₂N₆G₄

Another quality
residential project of

 **SHANG**
PROPERTIES®